

# **LOCKDOWN MONOPRINTS**

Drawings and Monotypes



**CHRISTOPHER GLANVILLE RWA**



# LANDSCAPE IN LOCKDOWN

2020 VISION

CHRISTOPHER GLANVILLE

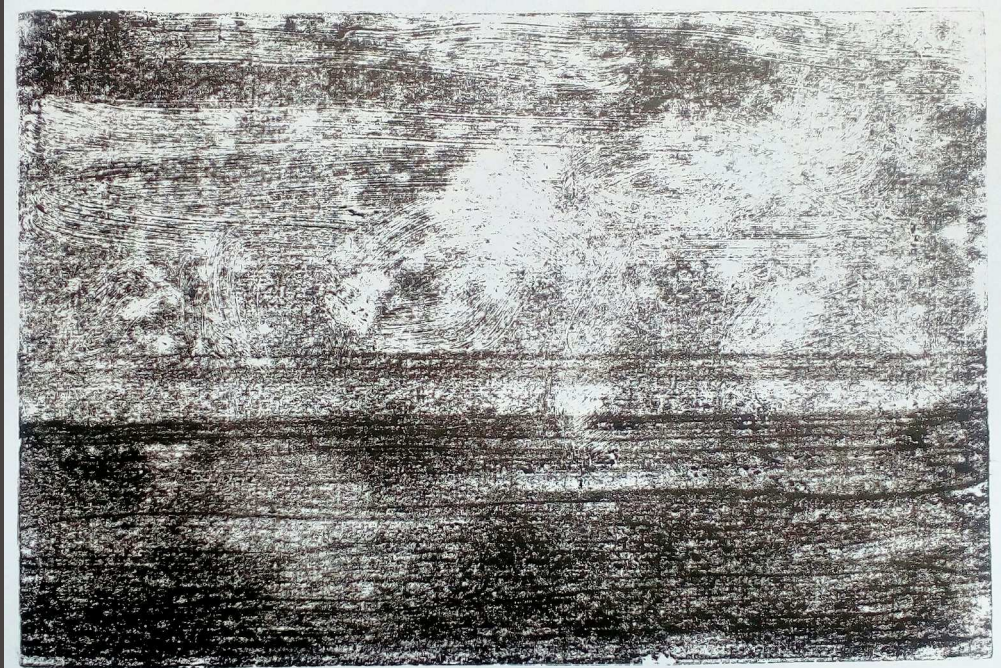


[www.rwa.org.uk](http://www.rwa.org.uk) [www.pleinair.co.uk](http://www.pleinair.co.uk) [www.artuk.org](http://www.artuk.org)

Drawing has always been a central factor for me as the most immediate route to clarifying vision. This foundation was reinforced by the initial term of compulsory life drawing at the Royal Academy Schools, during which I eventually became interested primarily in everything around the model, and increasingly with the interior space. Then with the award of the Sir David Murray Landscape Scholarship, which brought me to work in Suffolk for the first time in 1971, a lifelong involvement with landscape in the UK and abroad became the focus for study of the visual world and its energies.

When the 2020 lockdown made travel impossible, a new look at landscape subject matter was invoked. Until then always preferring to work through direct drawing and painting, printmaking now became an inviting medium in tune with the times, with possibilities incorporating degrees of uncertainty and disconnection. In particular, the characteristics of monoprinting methods unfailingly impart uniqueness to each image, even within a series of monotypes, and in this sense, although achieved through an indirect process, they are true drawings, and quite distinct from editioned multiple prints of a single image. The resulting landscape monotype prints produced as explorations of the medium, brought into the studio impressions of freedom, immediacy, and engagement with the wider world during a time of restriction. Many of these works relate to the enduring sense and atmospheres of the East Anglian region and its coast.

CG.



Seventh Echo



Cromer

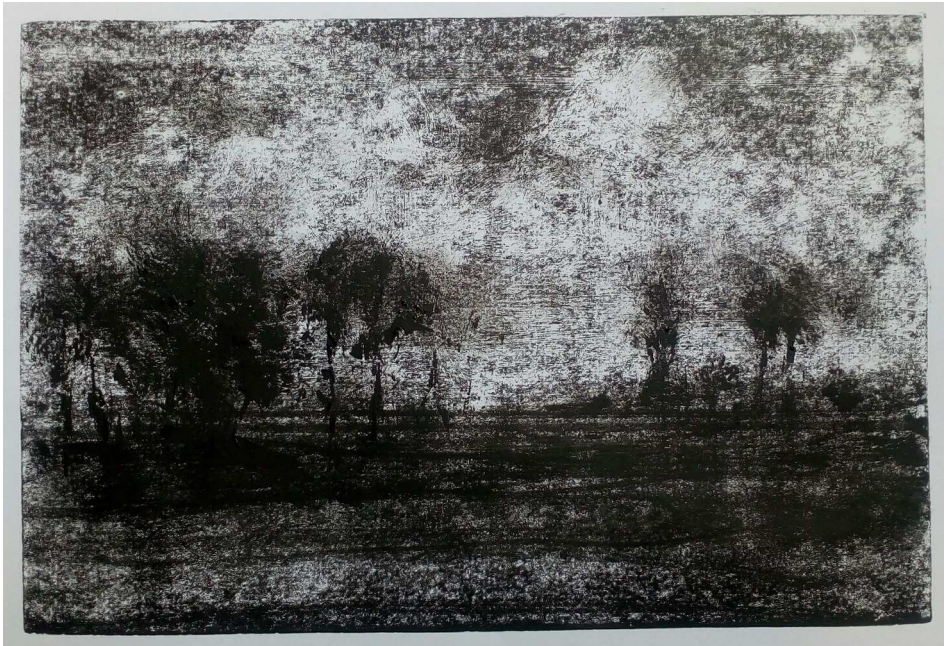


Beach Walkers #2

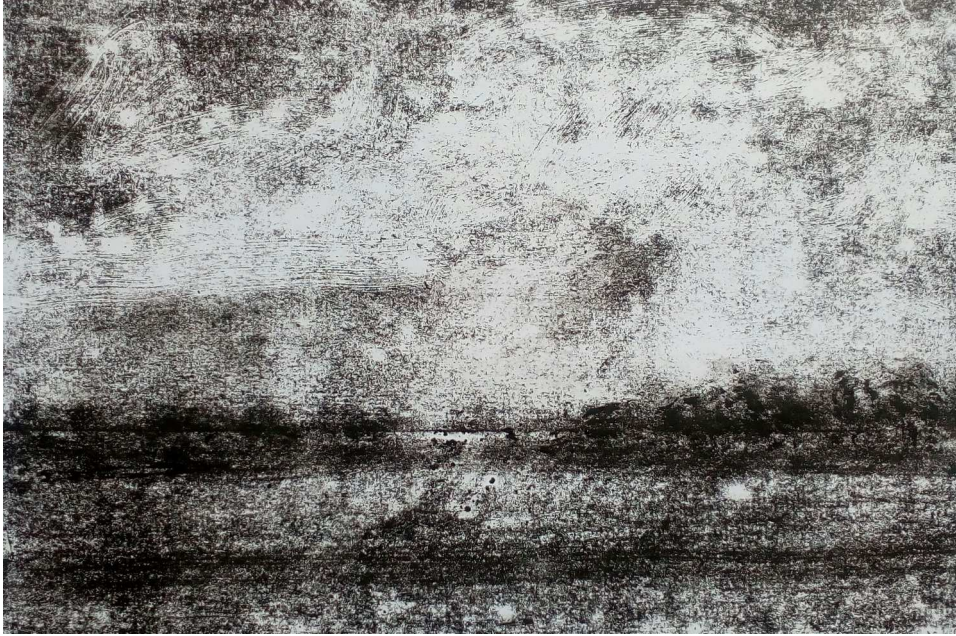


Campsey Ash





Bedfield



Watermeadows, Ingworth



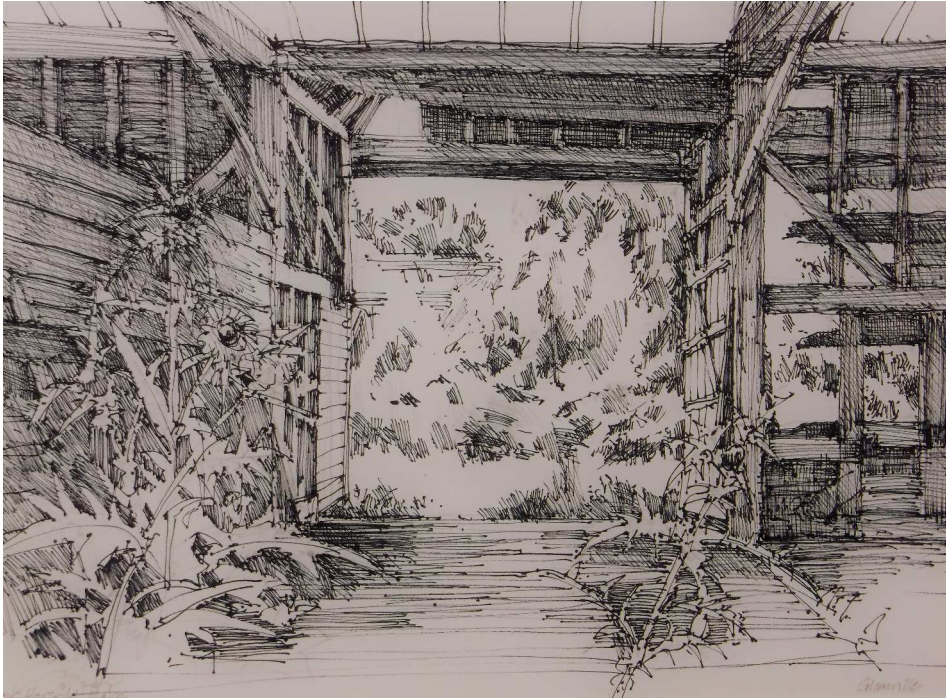
Carnac



Standing Stones, Avebury



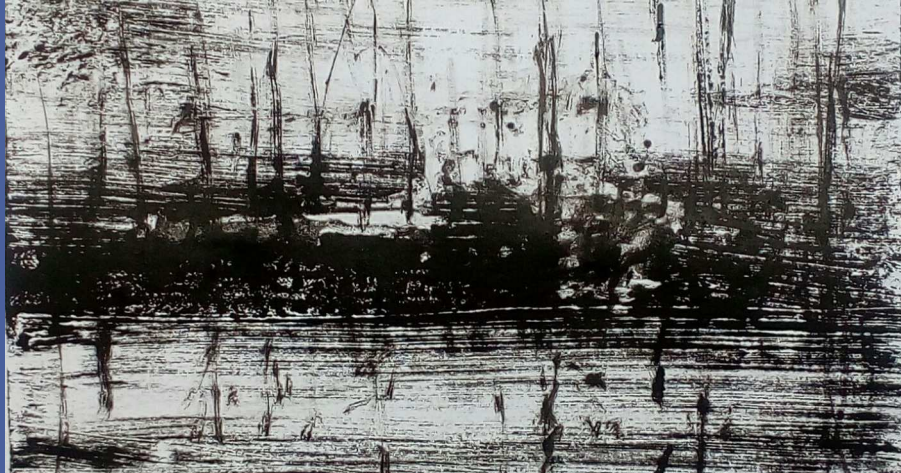
Woodbridge



Great Barn Interior



Granary

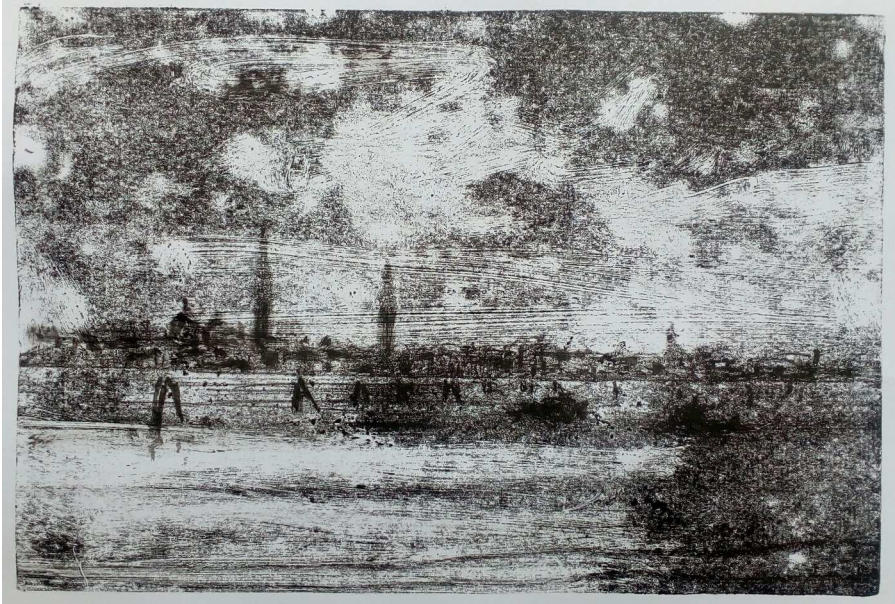


Dewpond

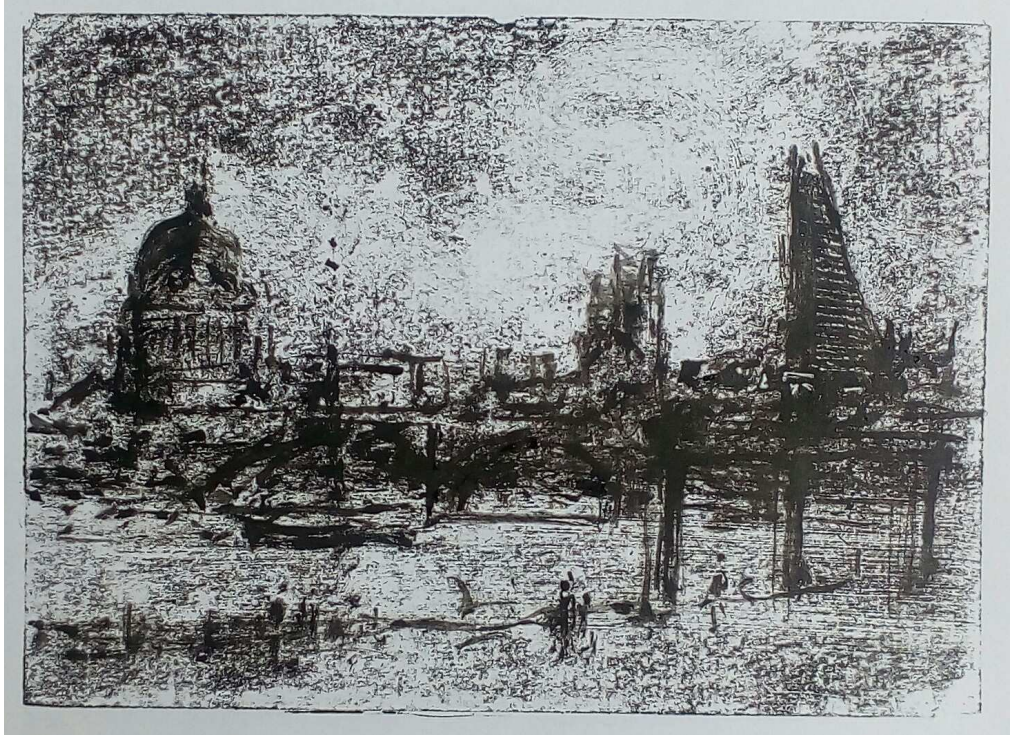




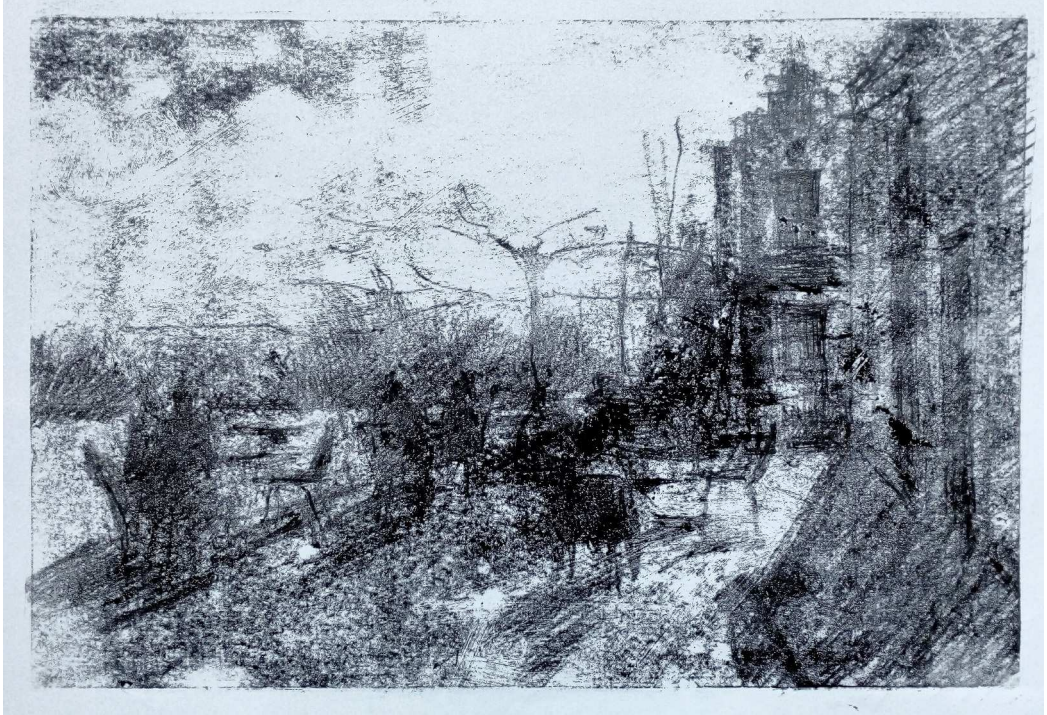
Salute



Campanili, Venice



Four Ages of London



Winter Sun

Christopher Glanville was born in London, & studied fine art at the Byam Shaw School of Drawing and Painting in Notting Hill, & at The Royal Academy Schools, Piccadilly, where a Landscape Painting Scholarship enabled his first direct engagement with the tradition of painting in a rural setting. An account of these studies in East Anglia which were grouped as 'Views on the Road to Eye' appeared in 'The Artist' magazine. Elected to the Royal West of England Academy in 1980, he has served on the RWA Council, & as Vice-President, during which time he curated the Academy's first London Exhibition. He continues to be a regular exhibitor with the RWA at their Galleries in Bristol, & with the East Anglia Group, whose members are all graduates of the Royal Academy Schools. The 2019 EAG exhibition 'LEGACY' at the Minories, Colchester, marked the 250th year of the RA Schools & the abiding influence they have had on painting in Britain since their foundation in the 18th century.

## EXHIBITED

Royal Academy Summer Exhibitions, London  
Royal West of England Academy Winter Exhibitions, Bristol  
5 Academicians, RWA Bristol  
Frost & Reed, London  
W H Patterson, London  
Bruton Street Gallery, London  
NEAC, Mall Galleries London  
Jerram Gallery, Sherborne  
Roland Goslett Gallery, Richmond  
Mandells Gallery, Norwich  
'LEGACY', RAS EAG, Minorities, Colchester

## REFERENCE

RA Exhibitors, Hillmarton Press  
Buckman's Dictionary of British Artists  
Who's Who in Art  
Art UK, Public Catalogue Foundation  
Witt Library, Courtauld Institute  
Bridgeman Art Library



